

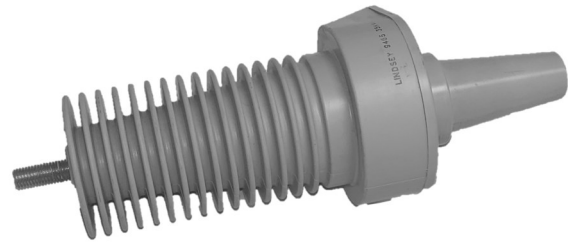
**Type CVMB**

**Combined Voltage and Current Sensing Apparatus Bushing**

The Type CVMB sensor combines voltage and current sensing functions in an IEEE Std 386 compatible apparatus to air interface bushing. The CVMB is ideal for pad-mount and metal-enclosed applications.

Combining voltage and current sensing functions provides many advantages

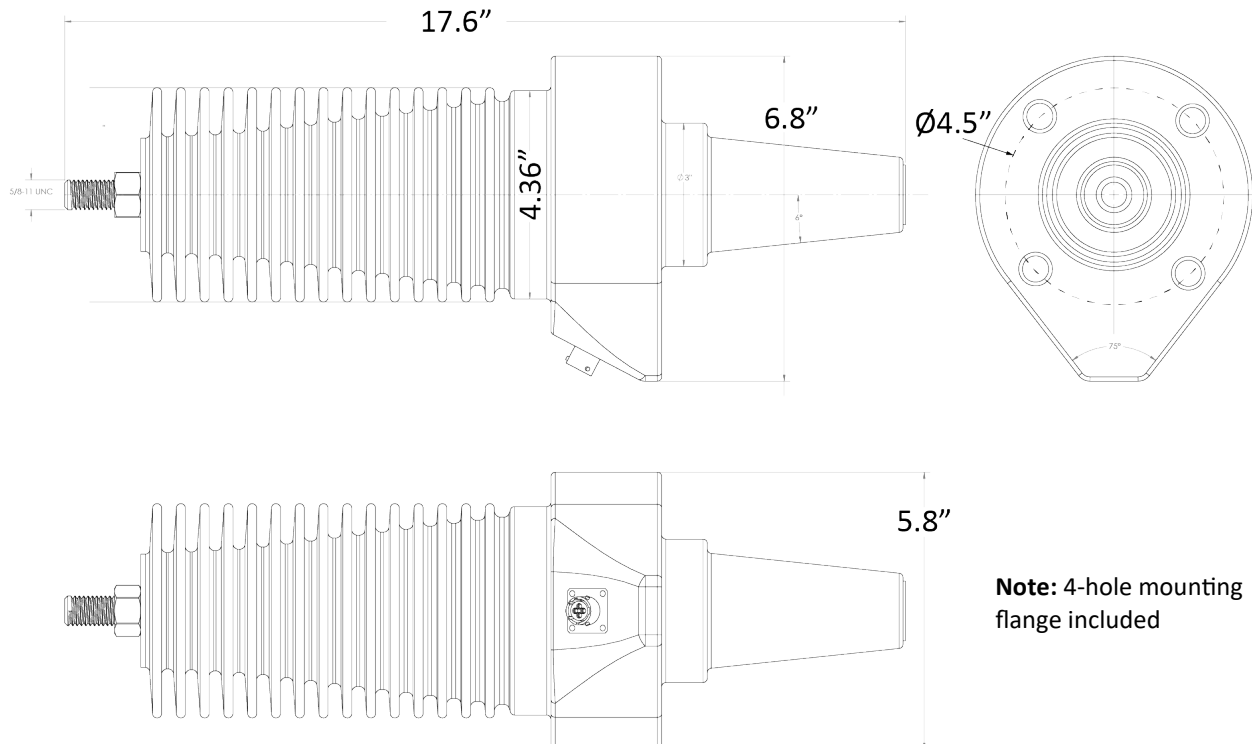
- Reduced space requirements in switchgear by eliminating the need to install separated metering PTs and CTs.
- Reduced cost
- Reduced MV wiring
- Simplified signal wiring



**Optimal Performance When Combined with Lindsey Cables**

Lindsey offers cables, multi-phase cables, cable assemblies, junction boxes, etc., to speed an simplify installation. Cables by Lindsey System offer:

- Controlled impedance across the sensor’s operating temperature range.
- Segregated and shielded signals to eliminate crosstalk, ensuring low noise
- Optimized cable construction minimizes parasitic capacitance, reducing signal loss and phase shift.



# Type CVMB Voltage and Current Sensing Bushing

## Type CVMB Voltage and Current Sensing Bushing Ordering Table

Part Number Sequence: A B C O/ D E F

A	B		C		O/	D	E	F
Family	Accuracy (Voltage and Current)		Voltage Class			Current Output	Voltage Output	Connector
9E7 CVMB	Blank	0.5%	6	25kV		3 600A:5A	1 1400:1	10 Bayonet
	M	0.3%	7	35kV		4 600A:1A	2 2200:1	X0 Custom
	R	0.15%				5 300A:5A	3 3300:1	For RJ45, see note.
						B 800A:1A	X Custom	
						C 1000A:1A		
						D 1200A:1A		
						X Custom		

**Note:** RJ45 adapter cable for relays adopting LPIT/LEA interconnection standards. Contact factory for ordering information.

**Example:** 9E7M70/3310 is a 35kV class CVMB voltage and current sensing bushing, 0.3% accuracy for both voltage and current, with a 600:5CT ratio and a 3300:1 voltage ratio with standard Bayonet connector.

## Type CVMB Voltage and Current Sensing Bushing Specifications

Voltage Class	By catalog Number
Rated Current	600A
Voltage divider accuracy	By catalog number
Current accuracy	By catalog number
Operating Temperature Range	-40°C to 55°C
BIL	150KV
Short time overcurrent	24kV for 0.17 sec and 10kA for 3.0 sec
Overload current	900A for 4 hours
DC Withstand	60kV for 15 minutes
Weight	15 lbs

Lindsey Manufacturing Co., dba Lindsey Systems  
760 N. Georgia Avenue | Azusa, CA 91702 USA  
Tel. +1-626-969-3471 | www.lindsey-usa.com

©2025 Lindsey Systems, Lindsey, and CVMB are trademarks or registered trademarks of Lindsey Manufacturing Co.

SPECIFICATIONS SUBJECT TO CHANGE WITHOUT NOTICE.

Publication Number 09F-022 CVMB • August 2025

