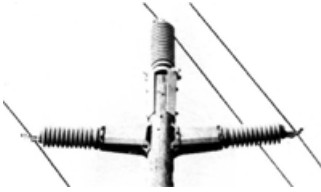


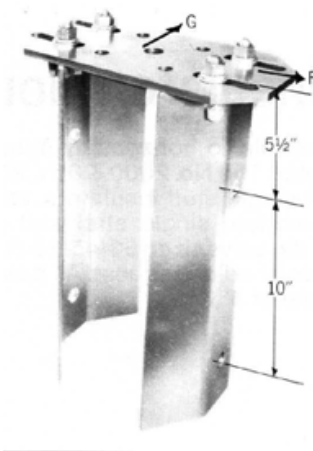


Pole Line Hardware

Pole Top Bracket (For mounting pole top vertical insulators)



Lindsey's Pole Top Bracket securely mounts to a pole top for installation of vertical insulator directly above the center of the pole for more uniform appearance installation to the pole is accomplished with two bolts (not furnished with brackets) which pass through the pole and side plates and are secured with nuts at both ends. Hole sizes in the side plates are 13/16". Brackets are adjustable to fit poles from 7 1/2 to 16". The top plate has a 5" bolt circle, with 11/16" holes, and center bolt hole 15/16" for insulator mounting. The Lindsey No. 8234 Drilling Jig shown in Section 8 is ideally suited for drilling mounting holes in the pole. The photo shows a typical triangular construction using the No. 2050 Pole Top Bracket and a Lindsey Horizontal Fail Safe Extension Arm with shroud.

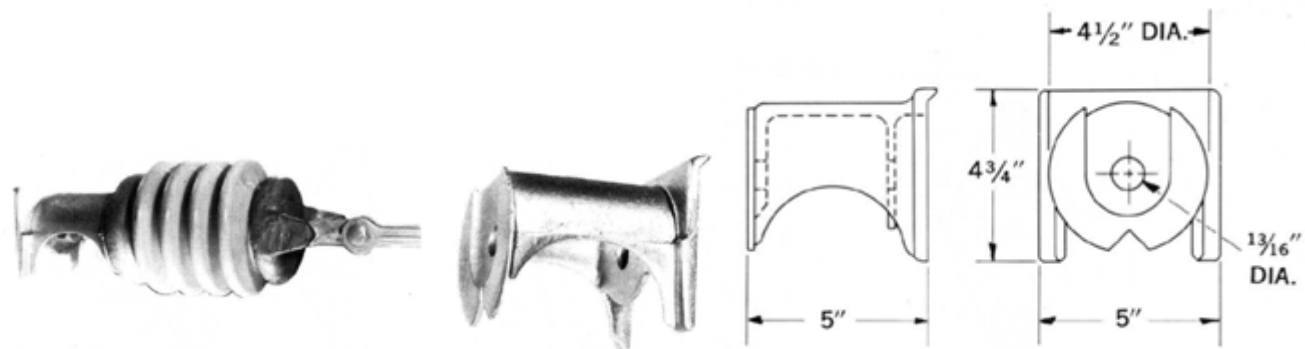


CATALOG NUMBER	INSULATOR LENGTH	YIELD LOAD*		POLE SIZE	INSULATOR MOUNTING
		F	G		
2050	25"	3000	2900	7 1/2" - 11"	Single 15/16" Dia. Holes
	56"	1875	1750		Four 11/16" Holes, 5" Bolt Circle
2051	25"	3000	1500	9 1/2" - 16"	Single 15/16" Dia. Holes
	40"	2250	1000		Four 11/16" Holes, 5" Bolt Circle
2052	45"	2800	2000	7 1/2" - 11"	Single 15/16" Dia. Holes
	60"	2200	1650		Four 11/16" Holes, 5" Bolt Circle

* Tests conducted with largest size poles.

No. 2060 Post Insulator Extension Bracket

A new bracket designed to accommodate lines post insulators is now available. Use of this bracket will allow clamp top line post insulators used as dead-ends to be mounted on double or triple cross arm assemblies by double nutting the bracket on the cross arm space bolts. The bracket will also provide greater phase separation of stack spans than is now possible where slack span dead-end insulators are used. Material is ductile iron, hot dip galvanized.





No. 2070 Insulator Angle Mounting Bracket

Insulator angle mounting brackets mount standard vertical line post or pin type insulators at an angle 60° from horizontal. Attached to the cross arm by means of a single square head bolt.

