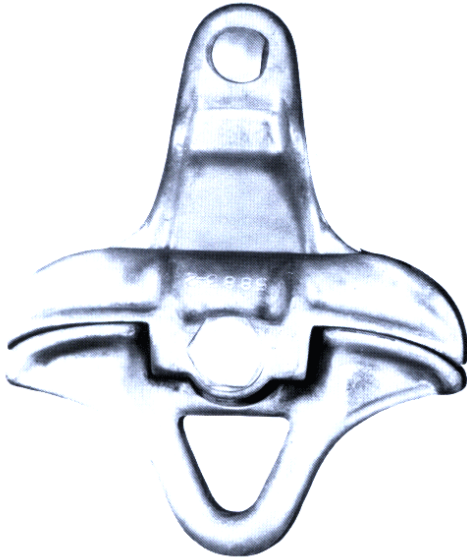




## Suspension Clamps

### "HOTLINE" Suspension Clamps

Specially designed for hot line work

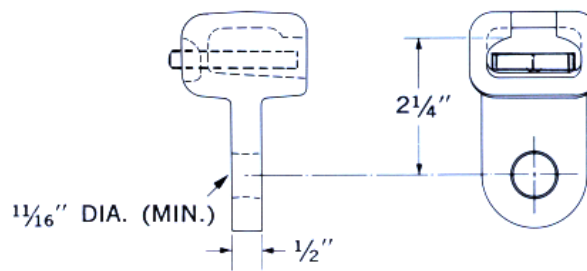
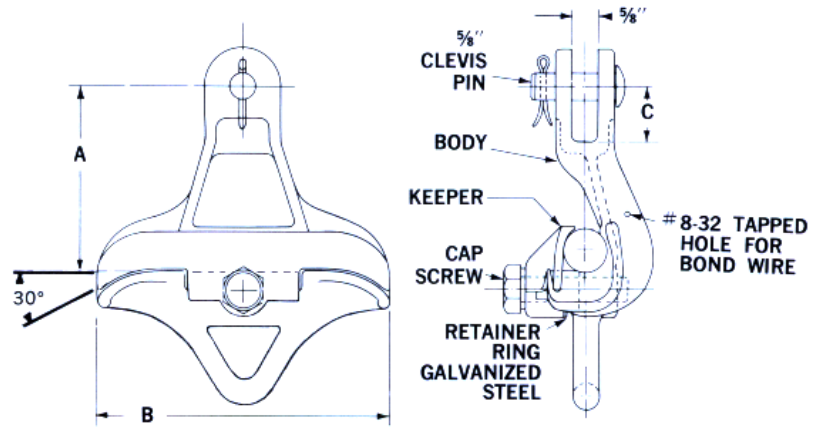


Only Lindsey "Hotline" suspension conductor clamps combine the unique patented features providing assured safe, rapid insertion or removal of the conductor by hand or with hot sticks while the clamp is attached to the insulator. Only one bolt fully opens or tightens the keeper. Hoisting lines or restraining weights can be attached to the tie down loop provided on the bottom of the body.

Accommodates a wide range of conductor sizes from .160 to 1.500 and strength loads up to 18,000 lbs. All parts, including the bolt are captive to prevent separation or loss.

All cast parts are high strength heat treated 356-T6 aluminum or 60-45-15 ductile iron, hot dip galvanized.

For correct clamp size to use with a given conductor, refer to the table in the Engineering Data Section on this catalog.



"S" SOCKET FITTING

#### DUCTILE IRON AND ALUMINUM

CATALOG No.	CONDUCTOR DIAMETER	DIMENSIONS			ULTIMATE STRENGTH VERT. LOAD	MATERIAL
		A	B	C		
1301	.160- .430	3 7/16	5 1/2	1 1/2	10,000	Ductile Iron
1305	.300- .700	4 1/4	6 1/2	1 1/2	18,000	Ductile Iron
1308	.500- .700	4 1/4	7	1 1/4	12,000	Aluminum
1312	.680-1.00	4 1/4	6 7/8	1	12,000	Aluminum
1316	1.0 -1.313	5 3/8	6 7/8	1 1/4	12,000	Aluminum
1320	1.24 -1.500	5 3/8	7	1 1/4	15,000	Aluminum

TO ORDER WITH SOCKET FITTING ADD SUFFIX "S"  
U.S. PATENT 2,975,997