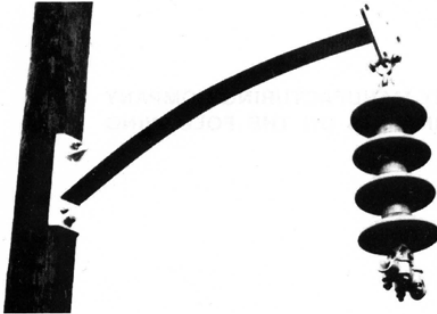




## Steel Davit Arms

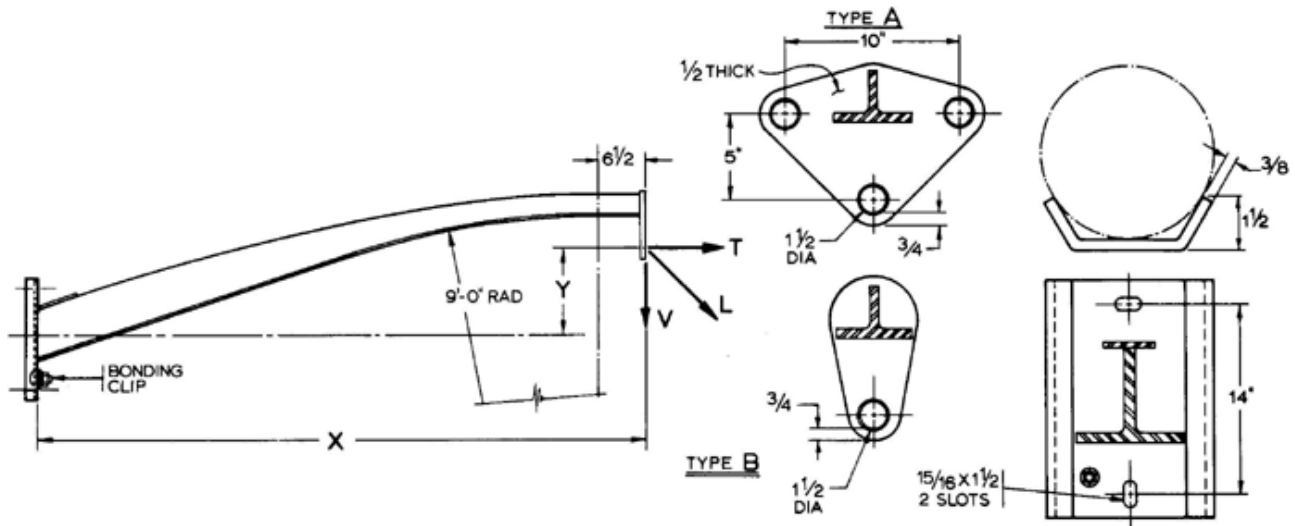
### Light Duty Tangent



Lindsey Light Duty Tangent Arms are designed for economy and reliability for use on wood poles. Arms can be arranged for double-circuit or single-circuit applications (back-to-back, vertical or delta configurations).

The steel used in fabricating these arms, meets or exceeds the requirements of STM A6. All welding conforms to AWS standards, and all arms are hot dipped galvanized in accordance with ASTM A-123.

Since there are no hollow cross sections in these arms, the possibility of internal corrosion is prevented. Arms are available with a choice of two styles of end plates and all arms are supplied with a bonding clip.



LINDSEY CATALOG NUMBER		X	Y	YIELD LOAD IN LBS.		
TYPE A	TYPE B			VERTICAL	TRANSVERSAL	LONGITUDINAL
2601	2621	3' - 6"	0' - 3"	2800	2000	570
2602	2622	4' - 0"	0' - 4"	2500	2000	500
2603	2623	4' - 6"	0' - 4"	2200	2000	445
2604	2624	4' - 10"	0' - 4 1/2"	2000	2000	400
2605	2625	5' - 6"	0' - 9"	1800	2000	365
2606	2626	6' - 0"	0' - 10"	1650	2000	335
2607	2627	6' - 6"	0' - 11"	1500	2000	300
2608	2628	7' - 0"	1' - 0"	1400	2000	285