

T&D Fittings

Hold Down Weights

Lindsey manufacture a wide variety of transmission line hold down weights manufactured from ductile iron in 50 pound increments. All fittings and fasteners are hot dip galvanized per ASTM 153. Cotter keys are humpback stainless steel (304) type. All weights are painted with rich zinc organic paint, dry film weight: 92-95% 3MLS min. per ASTM A163 & ASTM A90.

Modular Hold Down Weights

3704 Series hold down weights are available in 50 lb increments up to 500 lbs per weight. The weights may be provided with either of two mounting options:

- Factory assemble eye bolt to attach to suspension clamps fitted with hold down shackles. See Figure 1.
- Factory assembled rod for mounted through a hole in a yoke plate. See Figure 2.

How to Order

MOUNTING STYLE	CATALOG NUMBER STRUCTURE	EXAMPLE CATALOG NUMBERS
Suspension clamp style with eye (Figure 1)	3704/XXX*	A 150 pound weight is catalog number 3704/150
Suspension clamp style with hook (Figure 1)	3704/XXX*	A 150 pound weight is catalog number 3704/150H
Yoke plate style (Figure 2)	R-21351/XXX*	A 300 pound weight is catalog number R-21351/300

*Replace XXX with the total weight in 50 pound increments, 50 pounds minimum, 500 pounds maximum

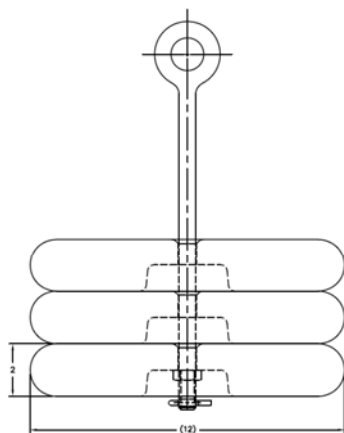


Figure 1

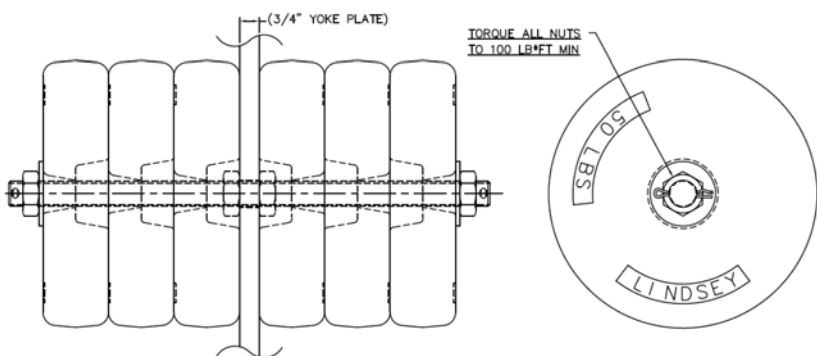


Figure 2

Copyright © 2015 Lindsey Manufacturing Co.

P.O. Box 877, 760 N. Georgia Av., Azusa, CA 91702 USA

Tel. +1(626) 969 3471

Fax. +1(626) 969 3177

www.lindsey-usa.com

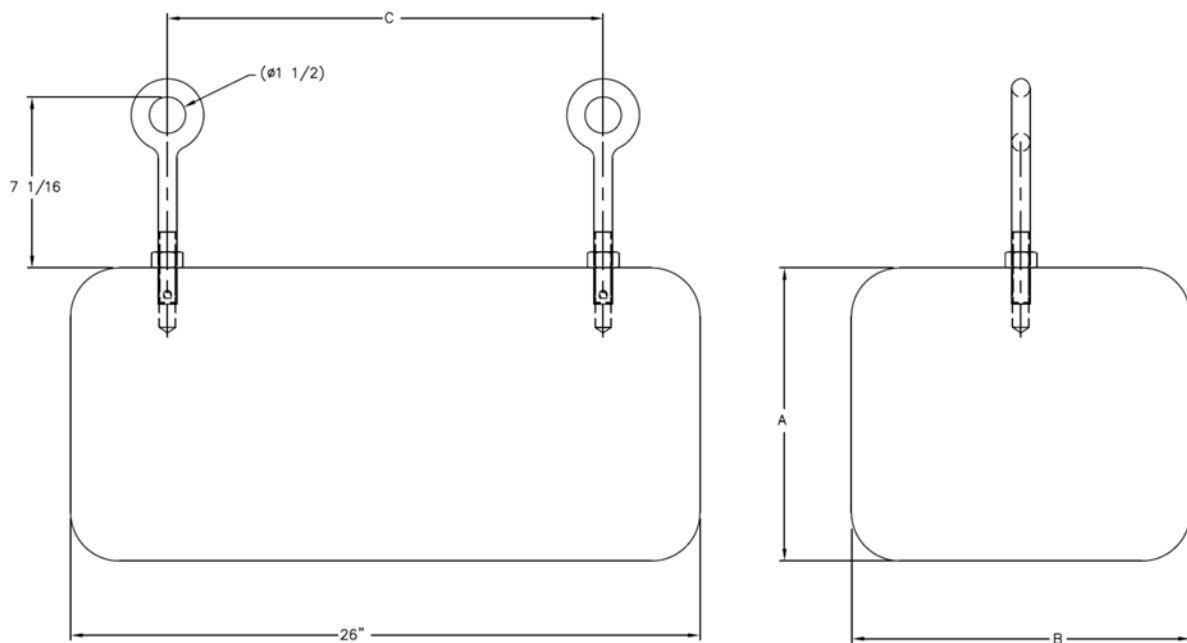
Publication Number 03C-003 WEIGHTS • 9-2015

T&D Fittings

Hold Down Weights

Monolithic Hold Down Weights

Available in weights from 200 to 1200lbs. Weights are intended to be supported from suspension shackles installed on twin circuit conductor clamps. Weights listed have a standard "C" dimension of 18 inches. Contact the factory if a different "C" dimension is required.



How to Order

CATALOG NUMBER	ASSEMBLY WEIGHT (POUNDS)	DIMENSIONS (INCHES)	
		A	B
3745	200	4 1/8	8
3750	300	3 1/4	14
3747	400	4 3/8	14
3751	500	5 1/2	14
3752	600	6 5/8	14
3748	800	8 7/8	14
3749	1200	13 1/8	14

T&D Fittings

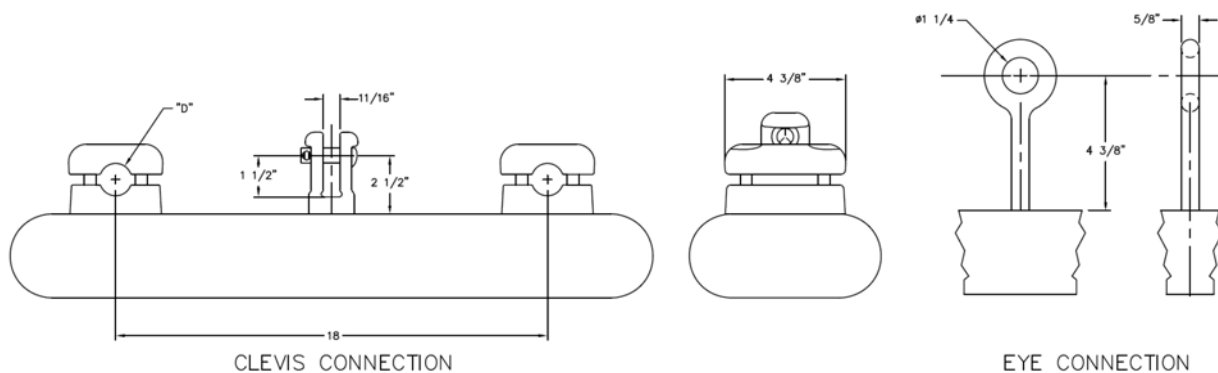
Hold Down Weights

Jumper Hold Down Weights

3701 Series with Clevis Connection

3702 Series with Eye Connection

Jumper hold down weights are available in both clevis and eye connections.



How to Order

Step 1: Select the appropriate “D” ordering code for the conductor diameter.

D CODE		100	130	163	204	248	275	300
CONDUCTOR DIAMETER RANGE (INCHES)	MAX	1.00	1.30	1.63	2.08	2.48	2.75	3.00
	MIN	0.68	0.90	1.21	1.63	2.04	2.43	2.70

For example, Bluejay conductor is 1.258” diameter, and therefore the 163 D code would apply.

Step 2: Build the Catalog Number

MOUNTING STYLE	CATALOG NUMBER STRUCTURE	EXAMPLE CATALOG NUMBERS for 1.258” CONDUCTOR
Clevis connection	3701/XXXX*-D	A 1000 pound weight is catalog number 3701/1000-163
Eye connection	3702/XXXX*-D	A 300 pound weight is catalog number 3702/300-163

*Replace XXXX with the total weight. Available in 50 pound increments, 125 pounds minimum, 1200 pounds maximum.

T&D Fittings

Hold Down Weights

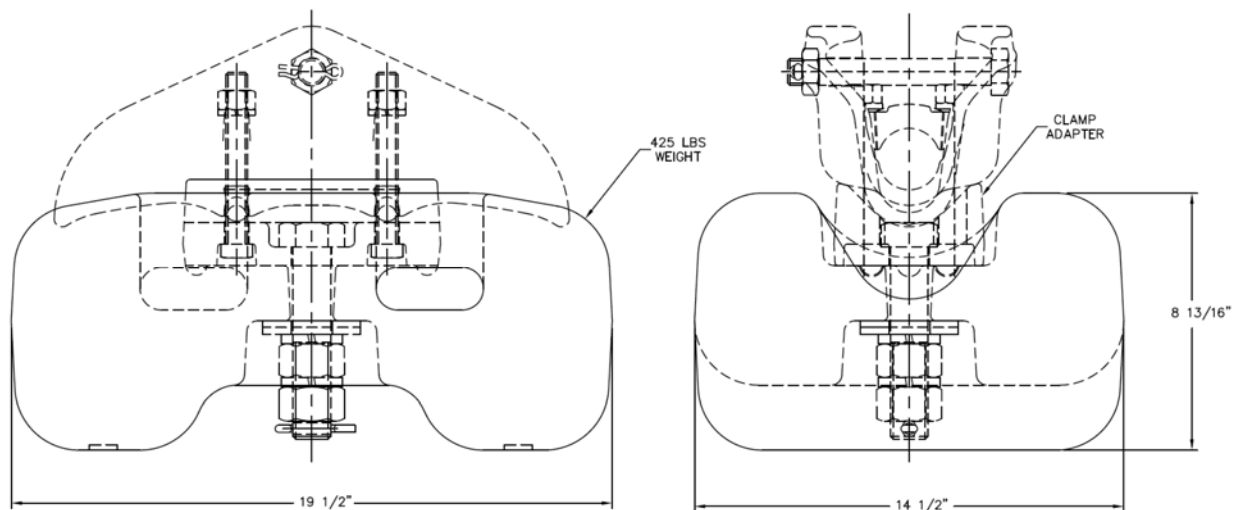
Tangent Hold Down Weights

3725 Series

Lindsey 3725 Series tangent hold down weights have several advantages over conventional hold down weights.

- The hold down weight adapter can be used with most any EHV suspension clamp and allows the weight to be added after the conductor is clipped in without removing the suspension clamp.
- The 425 pound weights will add 600 pound tension to each insulator string of a two bundle single V-string assembly.
- Weights are available in 150, 300, 425, 600, 750, 1125, and 1500 pound versions. Contact factory for correct ordering information.

All weights are designed to suppress field concentration and radio interference.



Drawing shown is for 425 pound weights. Dimensions will vary for other weight values.