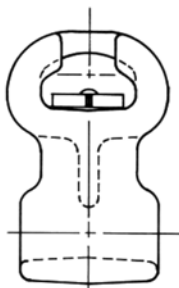
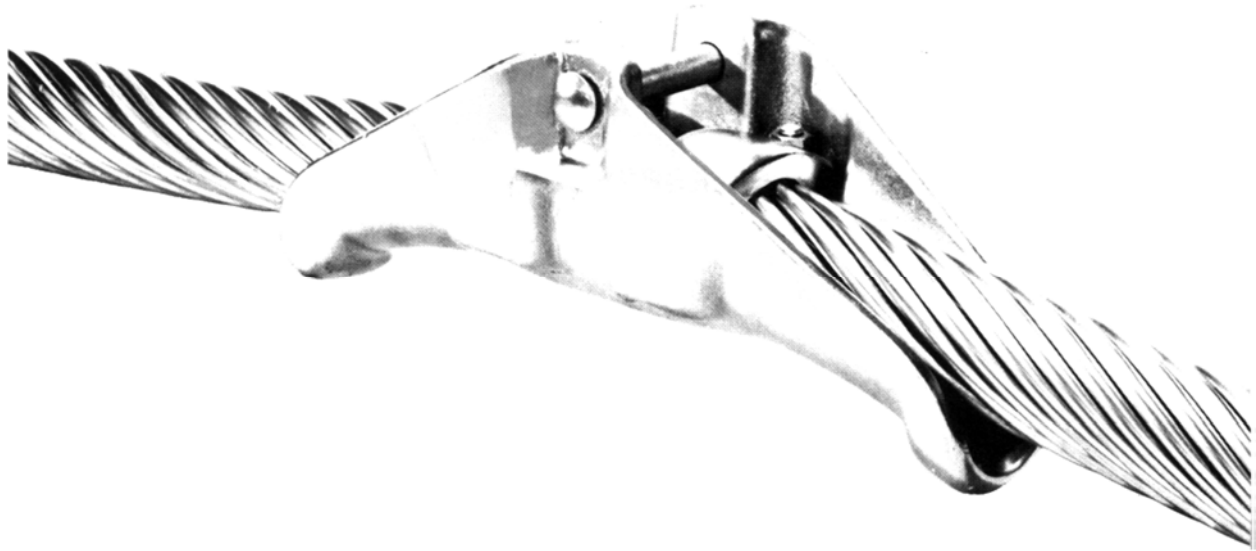


Suspension Clamps/ EHV Suspension Clamps, Series 1400

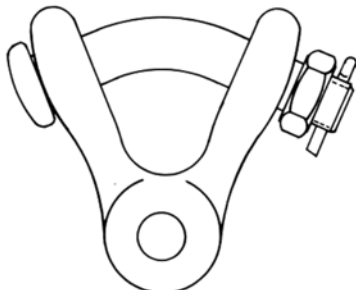
Computer designed and engineered for EHV construction

Computer designed and engineered for EHV construction

Lindsey introduces another new innovation in its growing line of transmission products. These new EHV Clamps are available in four styles with take-off angles from 0° to 30°.



Socket Eye
See Section 3



"Y" Clevis Eye
See Section 3

Check these engineering features:

- All edges are contoured to suppress field concentration and radio interference. The clevis pin and all bolts and nuts are completely shielded within the clamp.
- The conductor diameter range is minimized to eliminate excessive conductor distortion and fatigue.
- The long, gradually curved clamp groove distributes and minimized the clamping and supporting loads to prevent damage to the conductor strands.
- The clevis pin is locked against rotation to avoid excessive wear on the clamp ears, clevis pin and cotter key. All bolts are captive for ease of clipping in.
- Dual keepers allow for shorter clevis ears and reduces the coupling dimension. The pivot point remains directly above the conductor and reduces the possibility of conductor fatigue.
- Clamps are designed so that hold down weights may be attached after installation. Material is prime strength A-356-T6 aluminum.

Lindsey now has a complete package of clamps, yoke plates, corona shields and fittings for your EHV requirements.

Copyright © 2015 Lindsey Manufacturing Co.

P.O. Box 877, 760 N. Georgia Av., Azusa, CA 91702 USA

Tel. +1(626) 969 3471

Fax. +1(626) 969 3177

www.lindsey-usa.com

Publication Number 01C-001 SUSPENSION CLAMPS 1400 • 9-2015

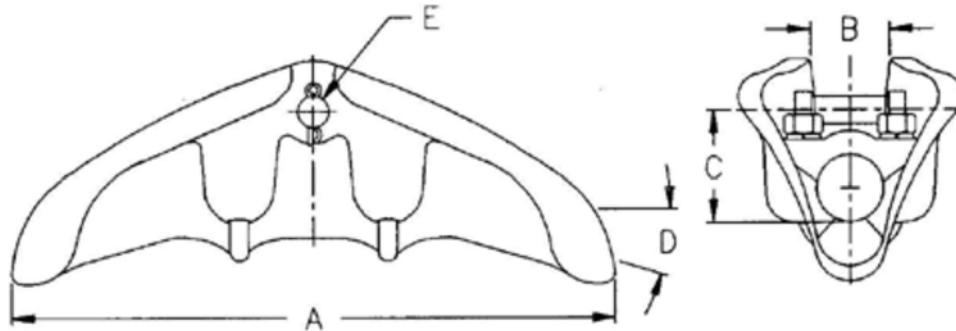
Suspension Clamps/ EHV Suspension Clamps, Series 1400

For ACSR and all aluminum conductors

Lindsey has full line of aluminum suspension clamps to support conductors on Extra High Voltage (EHV) lines. These clamps are designed to suppress radio interference and corona. The clamps are available in a variety of closely spaced diameter ranges to eliminate excessive conductor distortion and fatigue, and are available with take-off angles from 15 to 30 degrees. The clamp bodies and keepers are manufactured from lightweight, high strength A356-T6 aluminum alloy. U-Bolts, nuts, lock washers and clevis pins are hot dip galvanized steel. Humpback cotter keys are stainless steel.

To replace clevis pin with a bolt, nut and cotter key, add "BNC" to the catalog number (i.e., 1415/143BNC). Clamps may be ordered with factory assembled Y-Clevis Eye fitting by adding a "Y" to the catalog number (i.e., 1415/143Y).

The recommended torque on the 1/2" U-Bolts is 480 inch/pounds.



CATALOG NUMBER	CONDUCTOR RANGE	DIMENSIONS					ULTIMATE STRENGTH (lbs)
		A	B	C	D	E	
1415/100	0.90 – 1.00	10 ¾	1 ⅜	2 ⅝	15	⅝	18,000
1415/111	1.00 – 1.11	10 ¾	1 ⅝	2 ¼	15	⅝	15,000
1415/120	1.10 – 1.20	12 ⅝	1 13/16	2 ⅜	15	⅝	25,000
1415/143	1.21 – 1.43	12	2 ⅝	2 9/16	15	⅝	25,000
1415/163	1.43 – 1.63	11	1 ⅞	2 ¾	15	⅝	20,000
1415/164	1.43 – 1.64	11	1 ⅞	3 ¼	15	⅝	30,000
1415/186	1.63 – 1.86	11	2 ⅝	3 ¼	15	⅝	25,000
1415/204	1.80 – 2.04	14	2 7/16	3 ⅝	15	⅝	25,000
1415/214	2.04 – 2.14	15	2 ¾	3 ½	15	¾	30,000
1415/248	2.20 – 2.48	12	3 ¼	3 11/32	15	¾	25,000
1415/271	2.60 – 2.71	15	3	3 ⅞	15	¾	25,000
1420/120	1.10 – 1.20	12 ¾	1 ½	2 ½	20	⅝	25,000
1420/270	2.50 – 2.70	13 ⅝	3 ¼	3 ⅞	20	¾	36,000
1425/163	1.43 – 1.63	16	2	3 ¾	25	⅞	35,000

Continued...

Copyright © 2015 Lindsey Manufacturing Co.

P.O. Box 877, 760 N. Georgia Av., Azusa, CA 91702 USA

Tel. +1(626) 969 3471

Fax. +1(626) 969 3177

www.lindsey-usa.com

Publication Number 01C-001 SUSPENSION CLAMPS 1400 • 9-2015



Suspension Clamps/ EHV Suspension Clamps, Series 1400

For ACSR and all aluminum conductors

...Continued

CATALOG NUMBER	CONDUCTOR RANGE	DIMENSIONS					ULTIMATE STRENGTH (lbs)
		A	B	C	D	E	
1425/180	1.63 – 1.80	16 ¼	2 ⅛	3	25	¾	20,000
1425/244	2.15 – 2.44	17 ⅜	3 ⅜	4 ¼	25	¾	40,000
1425/275	2.50 - 2.75	17 ⅜	3 ½	4 ¼	25	¾	55,000
1430/120	1.10 – 1.20	15 ⅛	1 13/16	2 ¾	30	⅝	25,000
1430/143	1.21 – 1.43	16 ¾	1 ¾	4 3/16	30	⅝	25,000
1430/214	2.04 – 2.14	17 ⅜	2 ⅜	4	30	¾	40,000