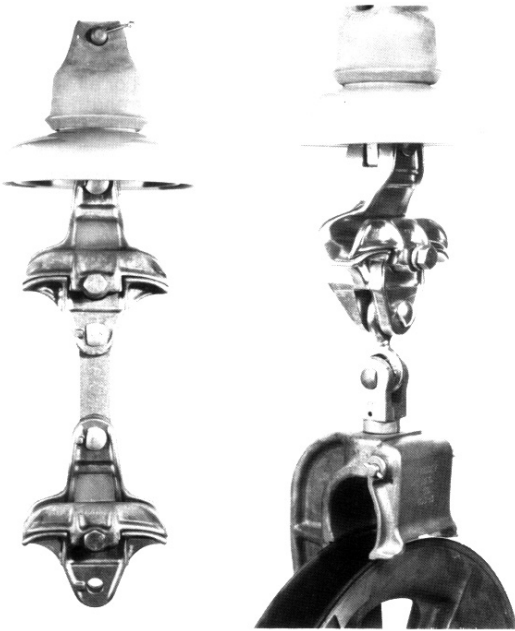




Suspension Clamps

Vertical Bundle Suspension Clamps, Side Opening

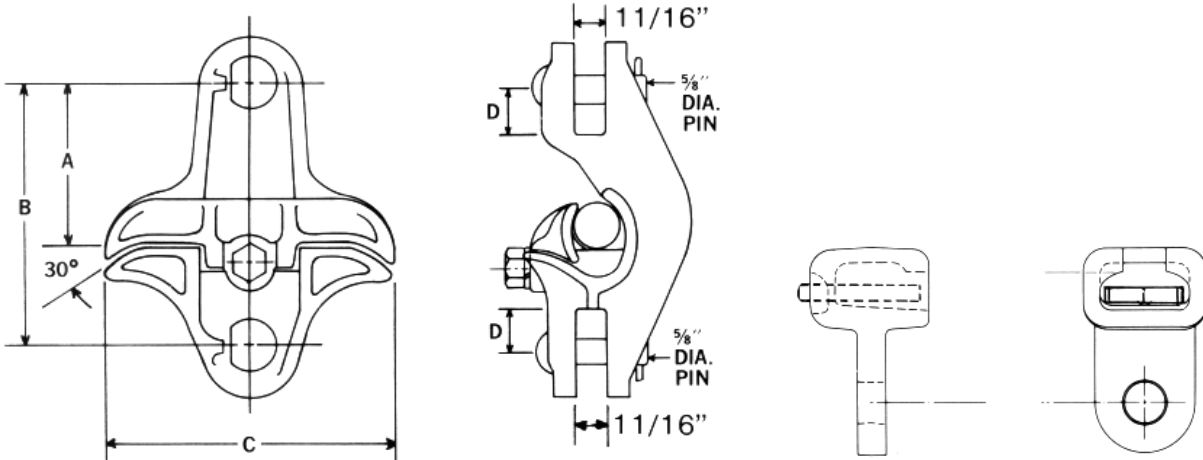


Lindsey Manufacturing Company has pioneered the Side Opening Vertical Bundle Clamp which provides captive parts for safe rapid conductor installation with standard tools or hot sticks. This versatile clamp is designed for new or rebuilt lines and accommodates conductor ranges from .500" to 1.500". It may be used as a single clamp and later upgraded to a vertical bundling configuration by simply adding a spacer bar and an additional clamp without removing or disturbing the original clamp. A single clamp and spacer bar may be added to an existing line for vertical bundle configuration.

Stringing travelers may be attached directly to the bottom clevis of the clamp for ease of installation and conduction transfer.

For ordering vertical bundle clamps specify spacing between conductors,. The correct size spacer bar will be furnished installed.

Material is A-356-T6 prime aluminum.
U.S. patent 2,975,997



CATALOG No.	CONDUCTOR DIAMETER (INCHES)	DIMENSIONS (INCHES)				ULTIMATE STRENGTH (LBS)
		A	B	C	D	
1526	.500 - .700	4 1/4	7	7	1 1/4	20,000
1530	.680 - 1.00	4 1/4	7	6 7/8	1 1/4	20,000
1534	.95 - 1.313	4 1/4	7	6 7/8	1 1/4	20,000
1538	1.24 - 1.50	5 3/8	8 3/4	7	1 1/4	25,000