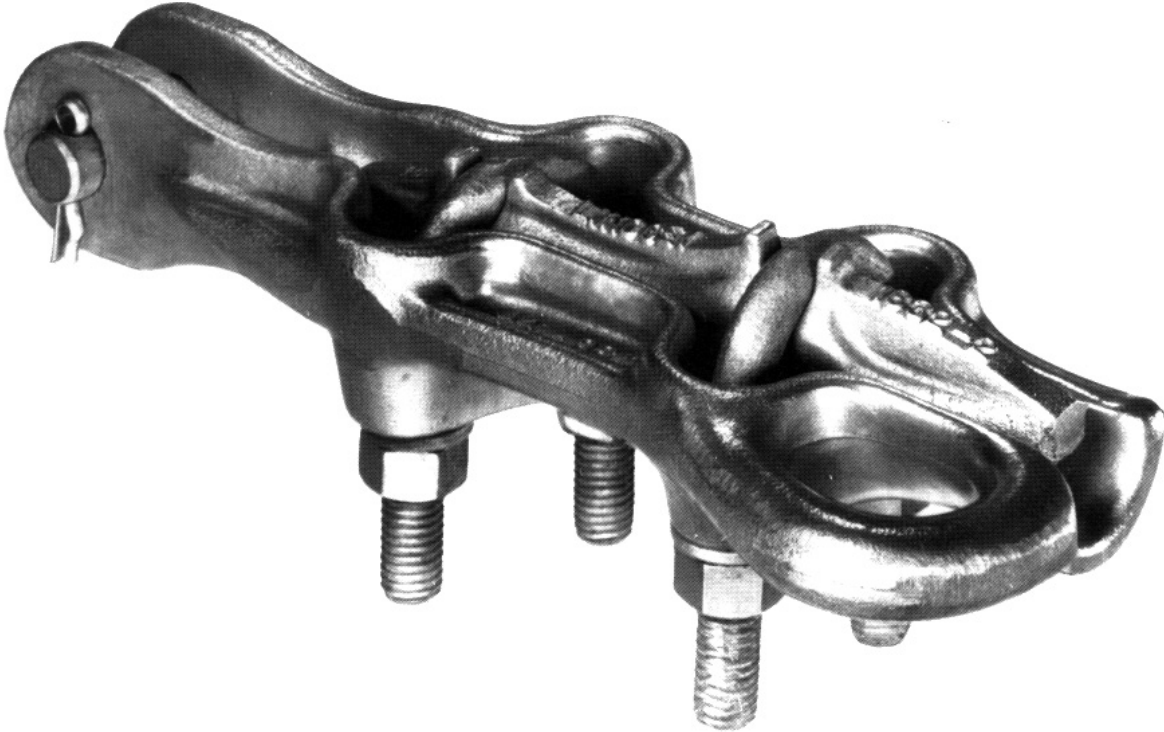


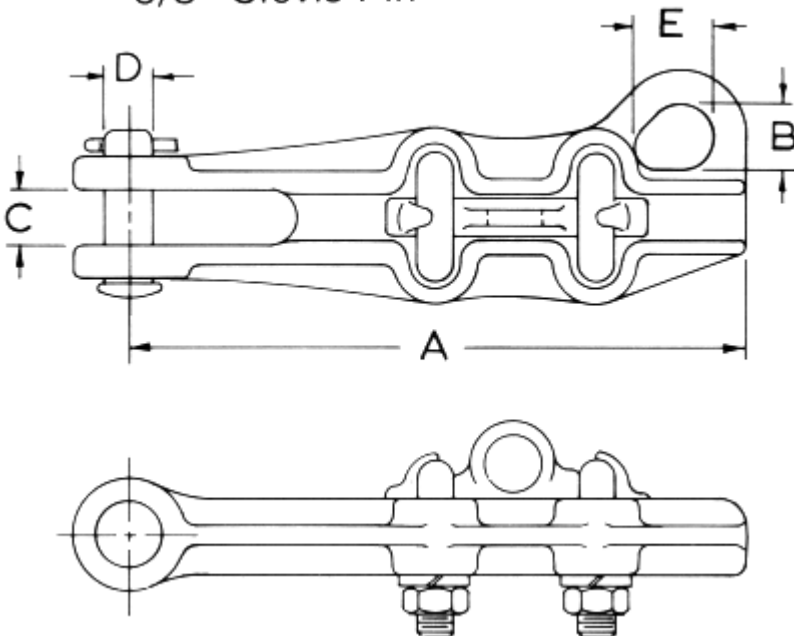


Strain Clamps

Straight Line Strain Clamps, Series 1630 (For ACSR and all aluminum conductors)



5/8" Clevis Pin



Lindsey's 1630 Series Aluminum Straight Line Strain Clamps are recommended for ACSR or all aluminum conductor. The clamp bodies and keepers are manufactured from lightweight, high strength A356-T6 aluminum alloy. U-Bolts, nuts, lockwashers and clevis pins are hot dip galvanized steel. Humpback cotter keys are stainless steel.

Clamps may be ordered with factory assembled clevis eye or socket eye fittings by adding a "C" or "S" respectively to the catalog number (i.e.. 1632C or 1632S). These fittings are hot dip galvanized ductile iron. Socket fittings are for use with ANSY Class 52-3 or 52-5 balls.

Copyright © 2005 Lindsey Manufacturing Co.
P.O.Box 877, 760 N. Georgia Av., Azusa, CA 91702 USA
Tel. +1(626) 969 3471
Fax. +1(626) 969 3177
www.lindsey-usa.com



The recommended torque on the U-Bolts is 300 inch/pounds for 3/8" and 480 inch/pounds for 1/2". All clamps are supplied with a lifting eye on the keeper.

CATALOG NUMBER	CONDUCTOR RANGE (INCHES)	CLAMP DIMENSIONS (INCHES)					U-BOLT QTY. & SIZE (INCHES)	ULTIMATE STRENGTH (LBS.)
		A	B	C	D	E		
1626	0.18-0.53	7 3/4	13/16	11/16	1 1/8	1 1/2	2-3/8	8,000
1630	0.19-0.63	8 1/4	7/8	3/4	1 1/8	1 1/2	2-1/2	10,000
1630/74	0.25-0.74	8 1/2	1	13/16	1 1/8	1 1/2	2-1/2	12,000
1632	0.36-0.92	9 1/8	1 1/4	7/8	1 1/8	1 5/8	2-1/2	12,000
1634	0.50-1.30	11 1/8	1 3/8	1	1 1/8	1 7/8	2-1/2	12,000

Required minimum torque on U-Bolts 35 Ft./Lbs.