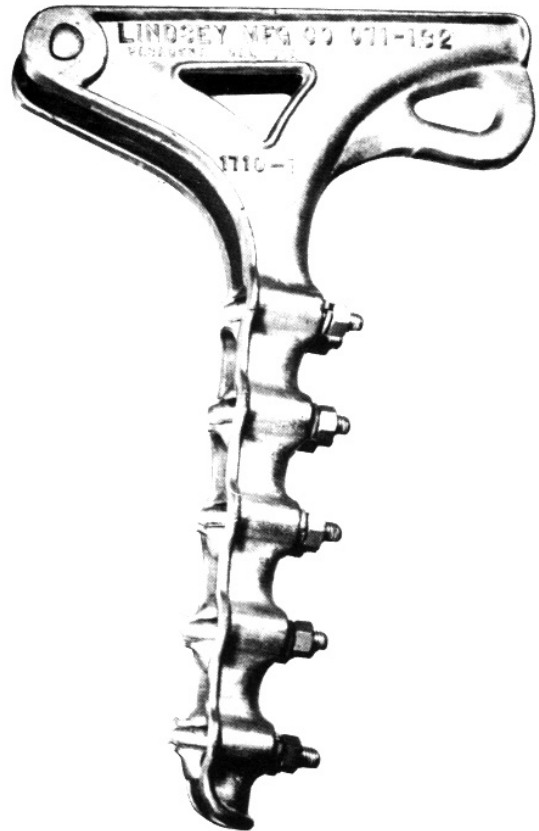
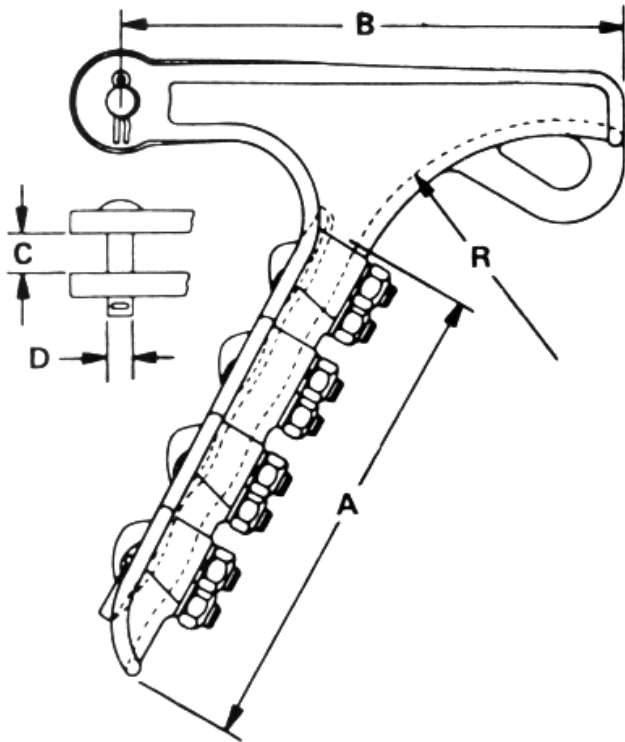




Strain Clamps

Quadrant Strain Clamps, Series 1700 (For ACSR and all aluminum conductors)



Lindsey's 1700 Series Quadrant Strain Clamps are recommended for ACSR or all aluminum conductor. The clamp bodies and keepers are manufactured from lightweight, high strength A356-T6 aluminum alloy. U-Bolts, nuts, lockwashers and clevis pins are hot dip galvanized steel. Humpback cotter keys are stainless steel.

Clamps may be ordered with factory assembled clevis eye, socket eye or long clevis eye fitting by adding a "C", "S" or "LC" respectively to the catalog number (i.e., 1702C, 1702S or 1702LC). These fittings are hot dip galvanized ductile iron. Socket fittings are for use with ANSI Class 52-3 or 52-5 balls.

The recommended torque on the U-Bolts is 480 inch/pounds for 1/2" and 720 inch/pounds for 5/8".

CATALOG NUMBER	CONDUCTOR Range (inches)	Clamp Dimensions (inches)					Ultimate Strength (LBS.)	U-Bolts	
		A	B	C	D	R		Qty.	Size
1700	0.20 - 0.64	5 ½	8	11/16	5/8	3 ¾	15,000	3	½
1702	0.30 - 0.75	6 ½	10	¾	5/8	4 ¾	20,000	4	½
1704	0.46 - 0.94	7 ½	11 1/2	1	5/8	5 ½	23,000	4	½
1706	0.50 - 1.11	8 ½	12 1/2	1 1/8	5/8	6 ½	27,000	5	½
1708	0.50 - 1.20	9	13	1 ¼	¾	7	30,000*	5	5/8
1710	0.71 - 1.40	10 ½	14 1/2	1 7/16	¾	8	30,000*	5	5/8
1712	1.00 - 1.65	12	15 ½	1 11/16	¾	9 ½	35,000*	5	5/8
1714	1.30 - 2.00	12	18	2	7/8	12	50,000*	5	5/8