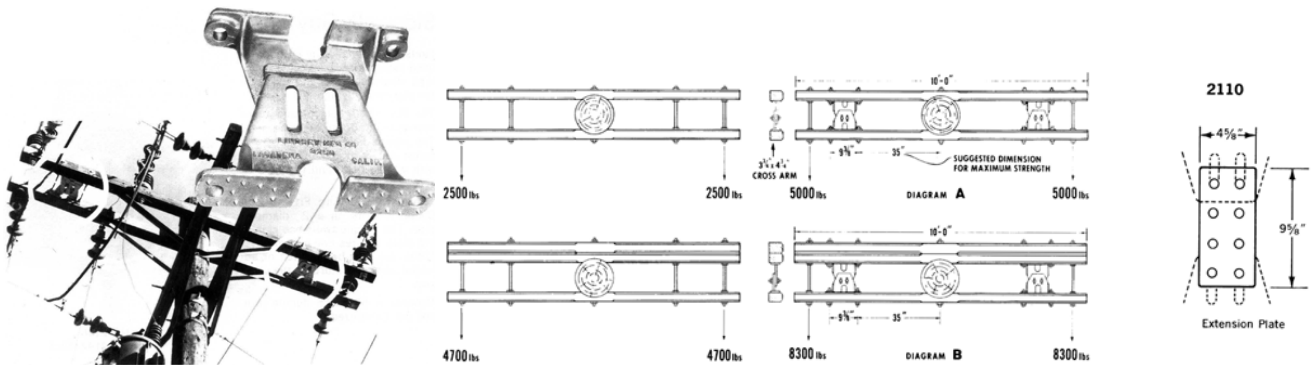




Pole Line Hardware

Double Arming Brackets

Lindsey's Double arming Brackets were designed for heavy end loads where a single guy wire is desirable. Diagram A shows how the breaking load of a double arm assembly increases from 2500 to 5000 lbs. Using Lindsey Double arming Brackets. Diagram B shows how breaking load of a triple arm assembly increases from 4700 to 8300 lbs. The Brackets are simple to install, easy to adjust and eliminate the necessity of larger timbers for dead-ending.



<p style="text-align: center;">2100</p>	<p style="text-align: center;">2101*</p>	<p style="text-align: center;">2102*</p>
<p style="text-align: center;">One casting only</p>	<p style="text-align: center;">Assembled with two 5/8" x 1 1/2" bolts and nuts (galvanized)</p>	<p style="text-align: center;">Assembled and furnished with four 5/8" x 6" bolts with nuts (galvanized)</p>
<p style="text-align: center;">2103</p>	<p style="text-align: center;">2104**</p>	<p style="text-align: center;">2105**</p>
<p style="text-align: center;">One casting only</p>	<p style="text-align: center;">Assembled with two 5/8" x 1 1/2" bolts and nuts (galvanized)</p>	<p style="text-align: center;">Assembled and furnished with four 5/8" x 6" bolts with nuts (galvanized)</p>

* Extends up to 17 1/2" with a 2110 Extensions Plate. ** Extends up to 20 1/2" with a 2110 Extension Plate