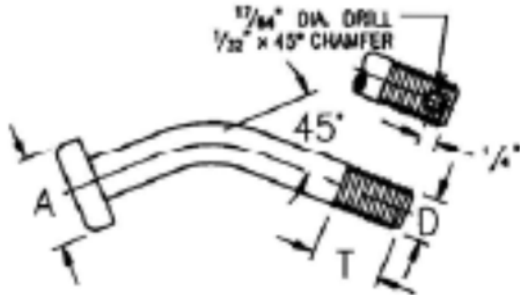


## T&D Fittings

### Miscellaneous Hardware

#### CURVED BOLTS

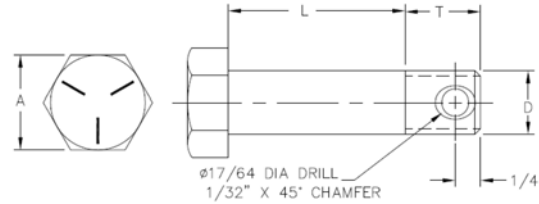
Grade 5 Galvanized



CATALOG NUMBER	DIMENSIONS (inches)			WEIGHT PER 100 PCS (LBS)
	D - THREAD SIZE	A	T	
3164-4	3/4 - 10 UNC	1 3/16	7/8	60
3479-4	7/8 - 9 UNC	1 3/8	15/16	91

#### HEX HEAD CAP SCREWS

Grade 5 Galvanized

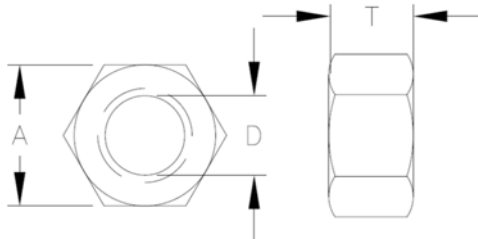


CATALOG NUMBER	DIMENSIONS (inches)		
	D - THREAD SIZE	A	T
1070-L	5/8 - 10 UNC	15/16	3/4
1071-L	3/4 - 10 UNC	7/8	1 1/8
1072-L	7/8 - 9 UNC	1 5/16	1

Specify desired "L" dimension in 1/4" increments. For example, to specify a 3/4" diameter bolt with a 2" "L" dimension, the catalog number is 1071-8.

#### HEX HEAD NUTS

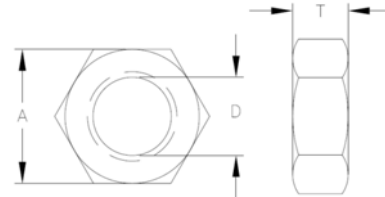
Galvanized and tapped for Galvanized bolts



CATALOG NUMBER	DIMENSIONS (inches)			WEIGHT PER 100 PCS (LBS)
	D - THREAD SIZE	A	T	
3-221	1/2 - 13 UNC	3/4	7/16	3.8
3-225	5/8 - 11 UNC	15/16	35/64	7.8
3-232	3/4 - 10 UNC	1 1/8	41/64	11.9
3-237	7/8 - 9 UNC	1 5/16	3/4	19.0

#### HEX HEAD JAM NUTS

Galvanized and tapped for Galvanized bolts



CATALOG NUMBER	DIMENSIONS (inches)			WEIGHT PER 100 PCS (LBS)
	D - THREAD SIZE	A	T	
3-222	1/2 - 13 UNC	1 1/8	7/16	7.7
3-233	3/4 - 10 UNC	1 1/8	7/16	7.7
3-236	7/8 - 9 UNC	1 5/16	1/2	12.0

Copyright © 2015 Lindsey Manufacturing Co.

P.O. Box 877, 760 N. Georgia Av., Azusa, CA 91702 USA

Tel. +1(626) 969 3471

Fax. +1(626) 969 3177

[www.lindsey-usa.com](http://www.lindsey-usa.com)

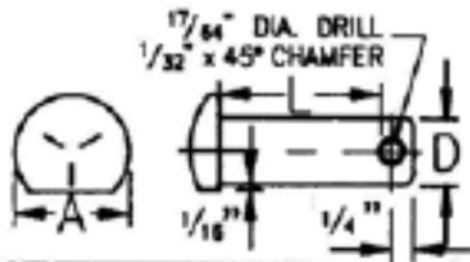
Publication Number 03C-005 MISC • October 2015

## T&D Fittings

### Miscellaneous Hardware

#### CLEVIS PINS

Grade 5 Galvanized

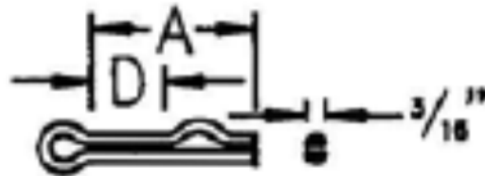


CATALOG NUMBER	DIMENSIONS (inches)	
	D	A
1050-L	5/8	15/16
1051-L	3/4	1 1/8
1052-L	7/8	1 1/4

Specify desired "L" dimension in 1/4" increments. For example, to specify a 3/4" diameter clevis pin with a 2" "L" dimension, the catalog number is 1051-8.

#### HUMPBACK COTTERS

Stainless Steel

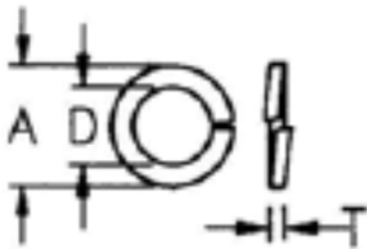


CATALOG NUMBER	DIMENSIONS (inches)	
	D*	A
3962-7/8	5/8	1
3962-1	3/4	1 1/8
3962-1 1/4	7/8 & 1	1 3/8

\*Nominal bolt diameter

#### LOCKWASHERS

Galvanized



CATALOG NUMBER	DIMENSIONS (inches)			WEIGHT PER 100 PCS (LBS)
	D	A	T	
3-204	1/2	7/8	0.13	1.64

\*Nominal bolt diameter